

# Samlan Homes Canada

## 780-219-5555

**SILVERWOOD**  
SINGLE SECTION HOMES



# Samlan Homes Canada

## STANDARD FEATURES & SPECIFICATIONS

### GENERAL CONSTRUCTION

- Built to the A-277 code zone 7A
- 8' Flat Ceilings
- Maintenance free vinyl lap siding and metal fascia
- Architectural asphalt shingle roof (limited lifetime warranty)
- 7/16" roof sheathing
- Engineered full 4/12 pitch roof trusses
- 18" front vented eaves (no side or rear eaves)
- Textured (primed) gyproc ceilings
- Exterior walls built 2"x6" and strengthened with 3/8" OSB sheathing on inside and outside of wall
- Covered gyproc throughout
- 19/32" T & G OSB Floor Decking glued and screwed
- Heavy tubular steel frame
- 2"x10" Floor joists @ 16" o.c. (16' & 20' wides)
- Decorative insulated 32" entry doors with dead bolt and peephole
- Coach lights at all exterior entrances
- Screen doors at rear exterior door
- Residential 1.6U-value, maintenance free Low E Argon Filled (R-5) PVC vinyl windows
- PVC windows, screens and security locks
- Exterior GFI electrical outlet
- Insulation meets zone requirements as per zone 7A/7B/8 of the 9.36 Energy Code: Floors R-48, Walls R-22 & Ceiling R-40 (min)

### TASTEFUL INTERIORS

- Plush Saxony carpet in Living Room, all bedrooms, and hall ways in 20' wides (lino in hallways of 16' wides)
- Quality cushioned linoleum flooring in all other areas
- Switched receptacles in bedrooms
- Pre-finished interior passage doors in Crystal White colour

### BRIGHT, BEAUTIFUL KITCHENS

- Exterior vented range hood with light
- Double stainless steel sink
- Doweled, full modular cabinetry
- Three distinctive colors of cabinet doors to choose from with matching moulding & trim colour
- Window over kitchen sink (most models)
- Peninsula Kitchen (20' wides only)
- Deluxe Tile Backsplash 3 3/4" x 12"

### SPACIOUS BATHS

- One-piece quality fiberglass tub and shower units
- Single lever faucet on tub/shower unit
- Expansive vanity mirrors
- GFI receptacle
- Exhaust fan(s)
- Deluxe Tile Backsplash 3 3/4" x 12"

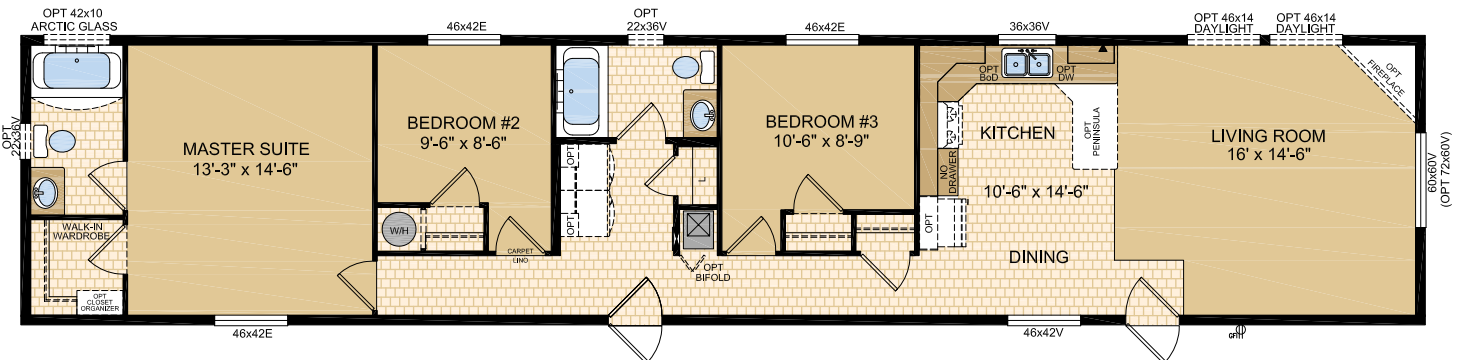
### UTILITY SERVICES

- 100 amp electrical panel
- Programmable thermostat
- Upgraded building envelope to meet 0.20 L/M2S
- 3m Insulated water lines on hot & cold sides at W/H
- Smoke detectors in bedrooms
- Arc Fault protection in public areas of home
- High efficiency (95.1+ AFUE) gas furnace with condensation pump
- 39 Imp. (40 US) gallon electric hot water tank 9.36 compliant
- Primary exhaust fan c/w dehumidistat & switch
- CO/Smoke Detector(s) c/w battery backup
- GFI protected receptacle for heat tape
- Wired, plumbed and vented for washer and dryer
- Communication outlet

## Jamestown

### Model 16401

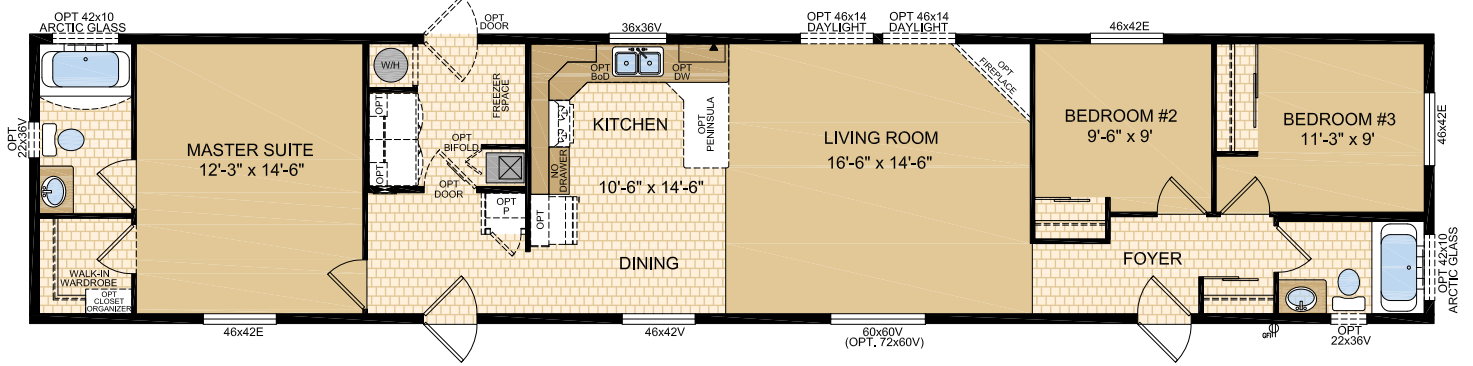
16' x 76' - 1,216 sq.ft.



## Kalimore

### Model 16405

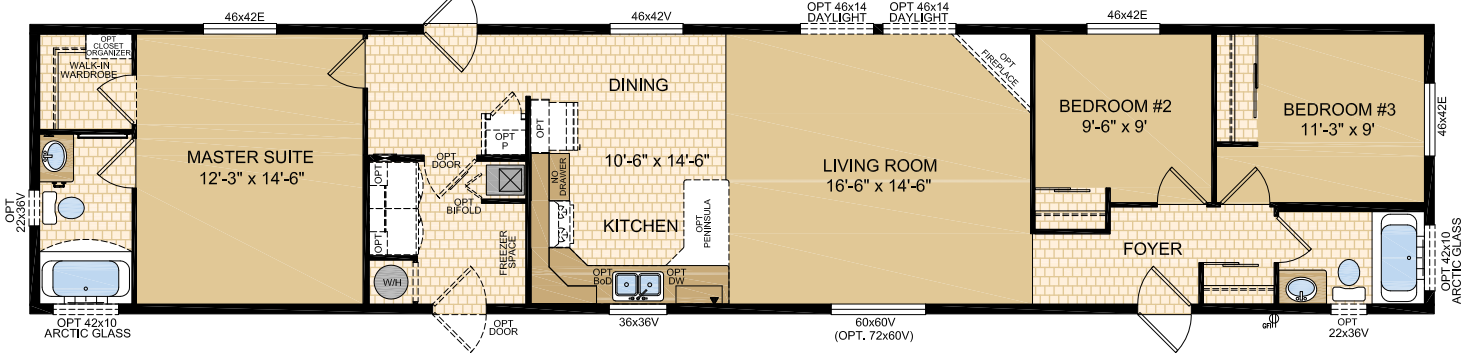
16' x 76' - 1,216 sq.ft. (Note: rendering shown on front cover)



## Victoria

### Model 16406

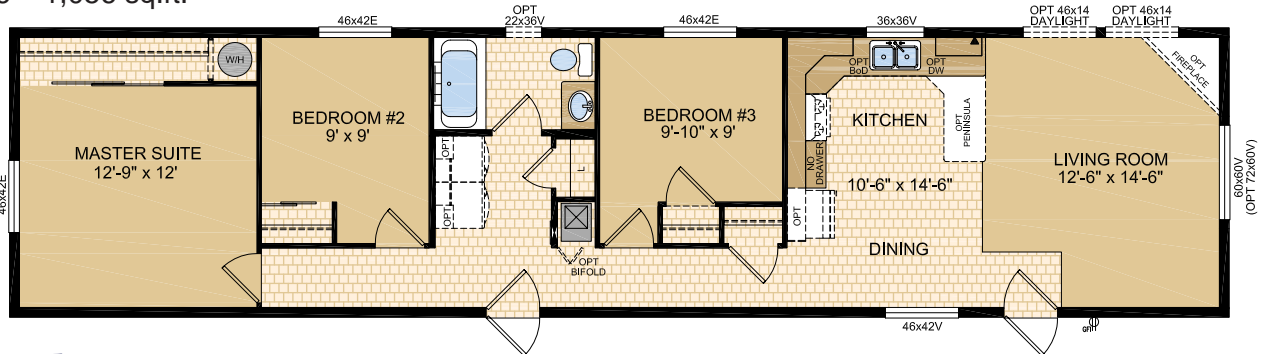
16' x 76' - 1,216 sq.ft.



## Inverness

### Model 16411

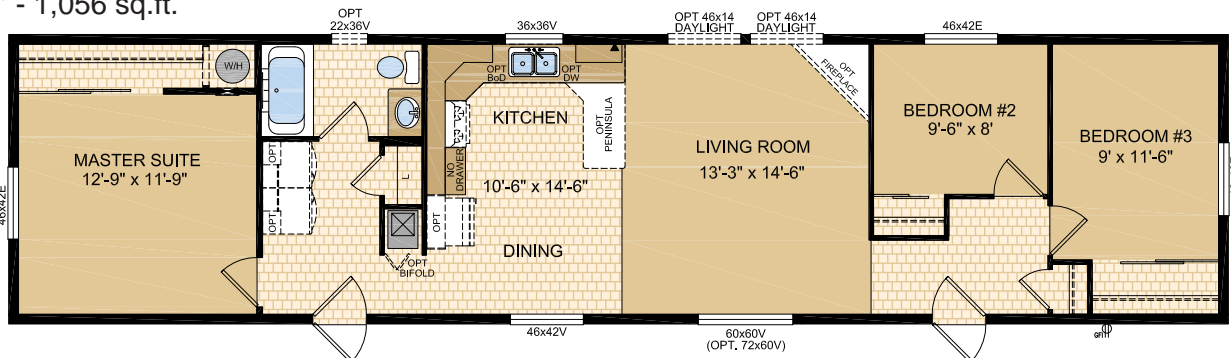
16' x 66' - 1,056 sq.ft.



## Jackson

### Model 16412

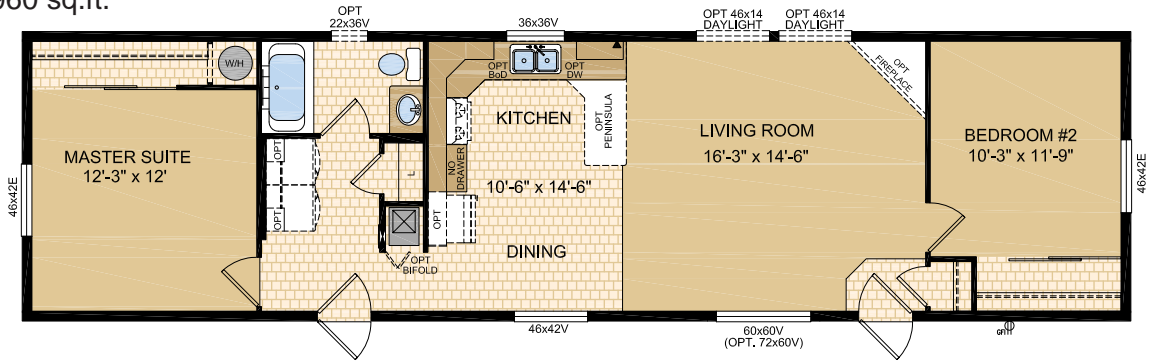
16' x 66' - 1,056 sq.ft.



## Kelowna

### Model 16422

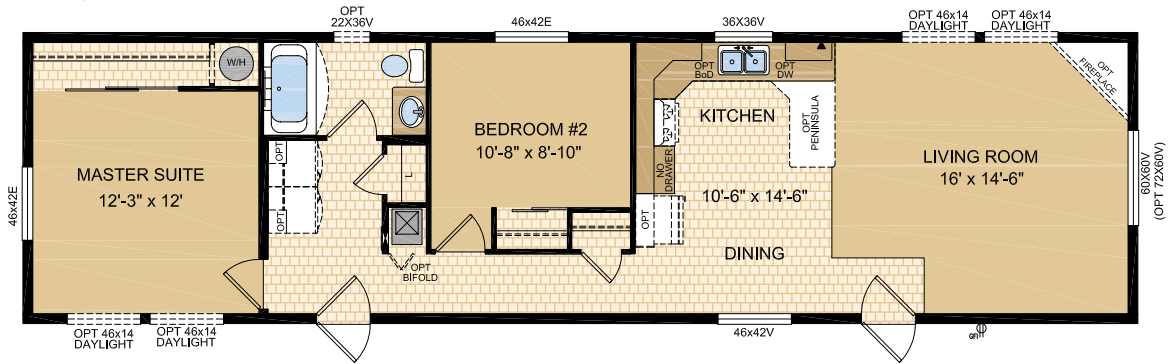
16' x 60' - 960 sq.ft.



## Innsbruck

### Model 16423

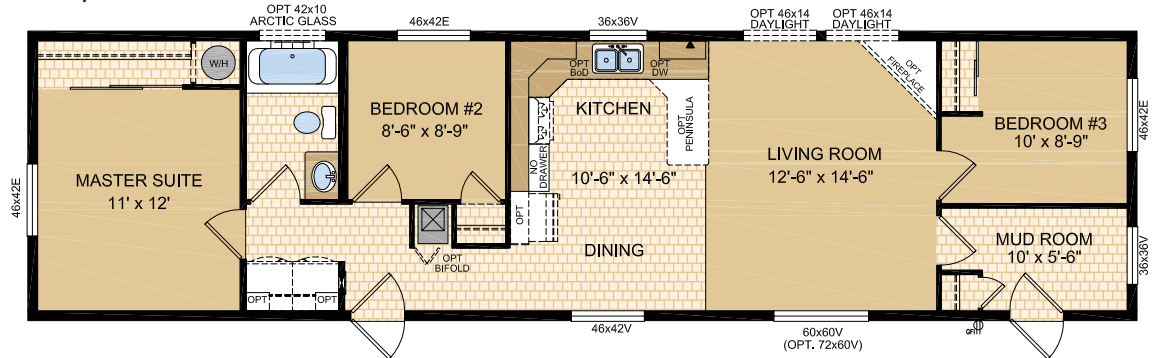
16' x 60' - 960 sq.ft.



## Jamaica

### Model 16426

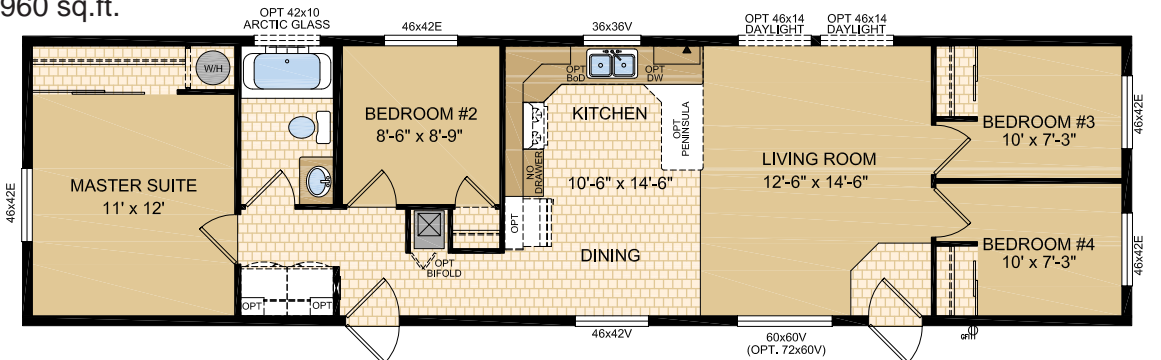
16' x 60' - 960 sq.ft.



## Kampala

### Model 16427

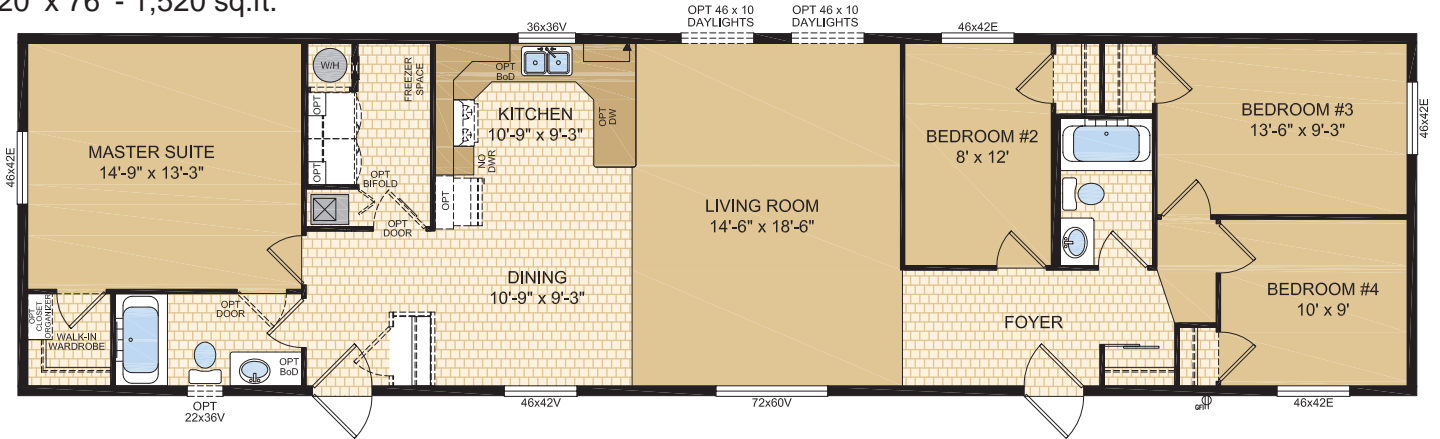
16' x 60' - 960 sq.ft.



## Bayport

### Model 20109

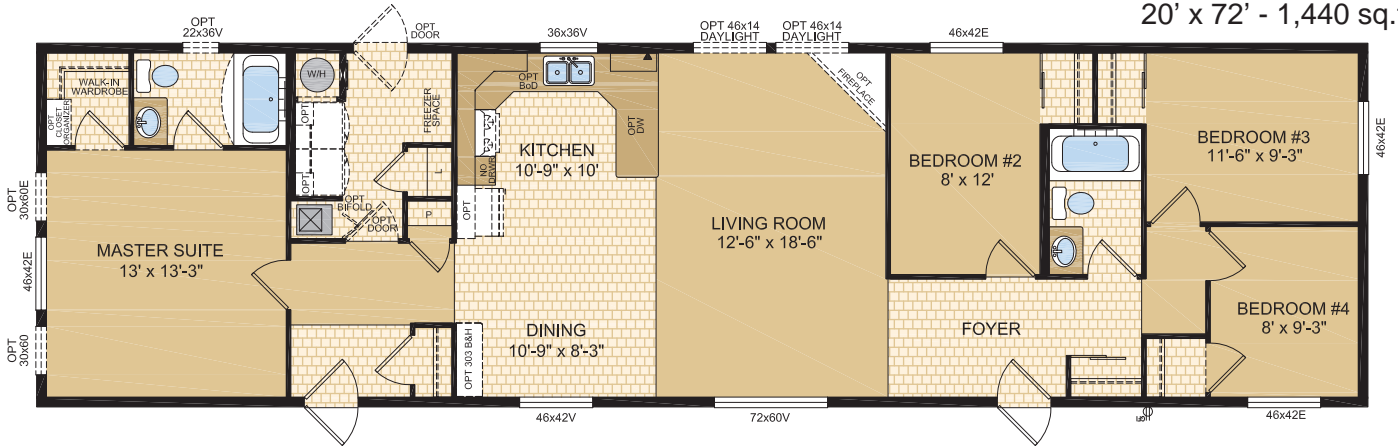
20' x 76' - 1,520 sq.ft.



## Lauderdale

### Model 20111

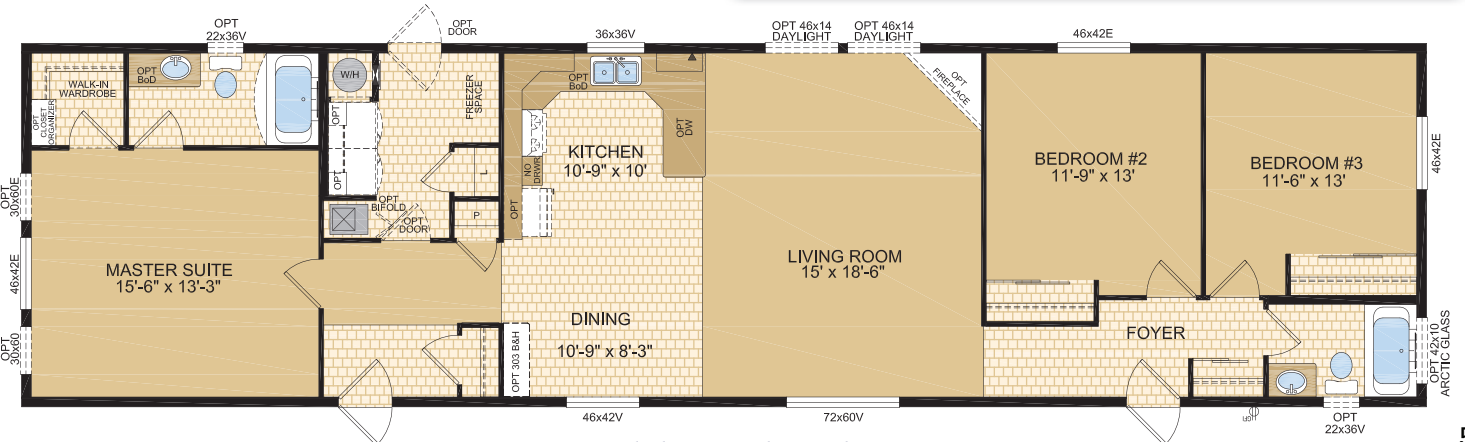
20' x 72' - 1,440 sq.ft.



## Nashville

### Model 20112

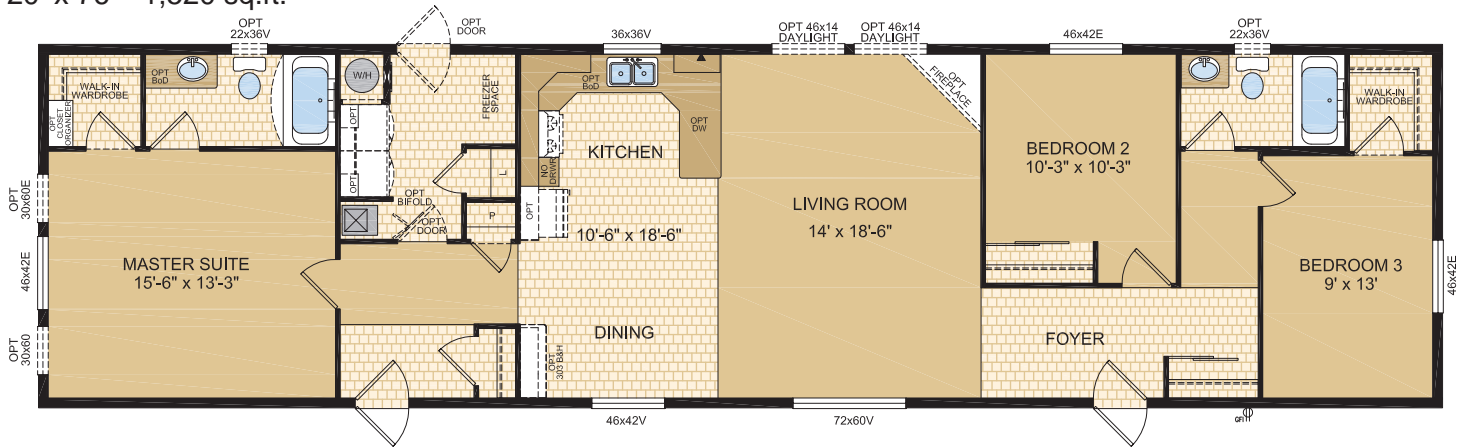
20' x 76' - 1,520 sq.ft.



## Nantucket

### Model 20113

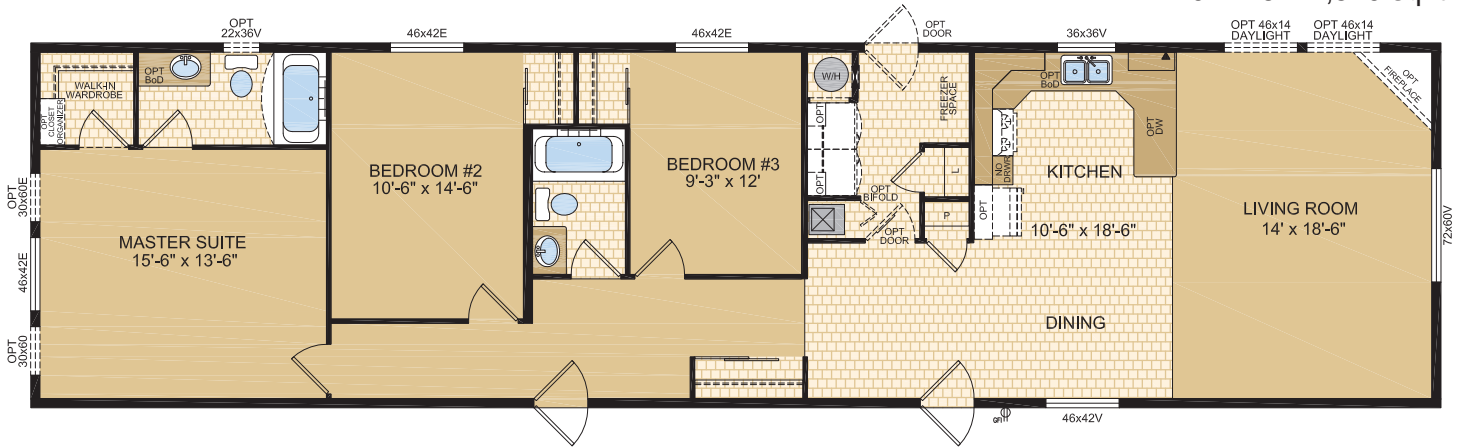
20' x 76' - 1,520 sq.ft.



## Naples

### Model 20114

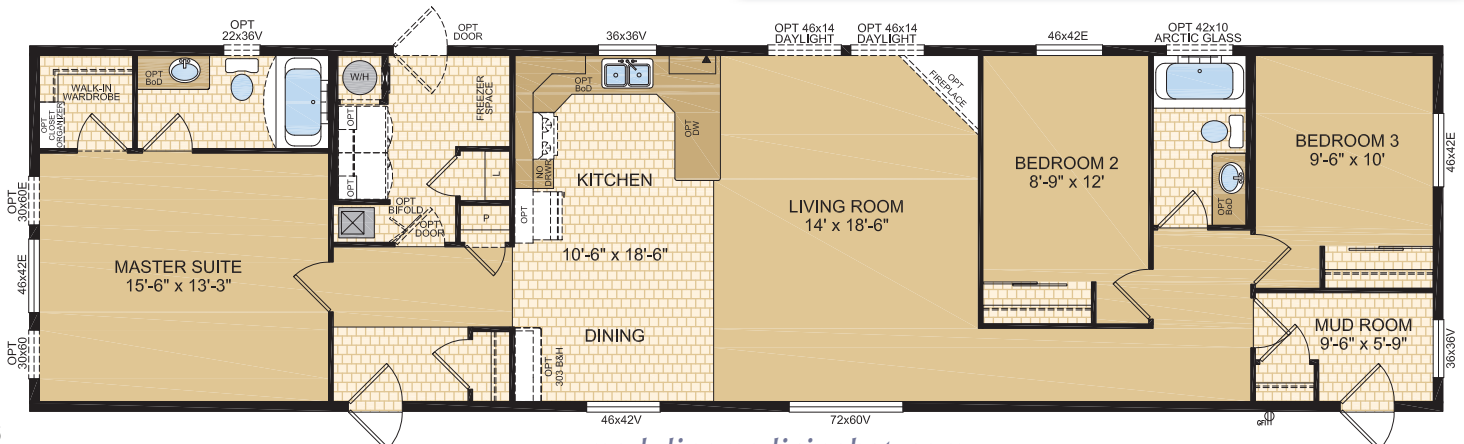
20' x 76' - 1,520 sq.ft.



## Olympia

### Model 20115

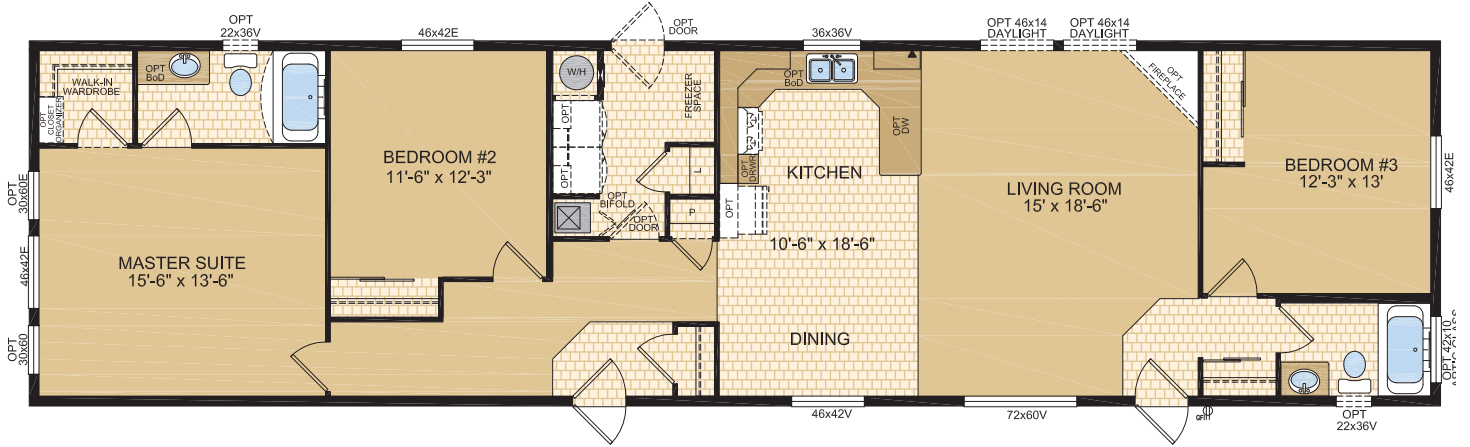
20' x 76' - 1,520 sq.ft.



## Nassau

### Model 20116

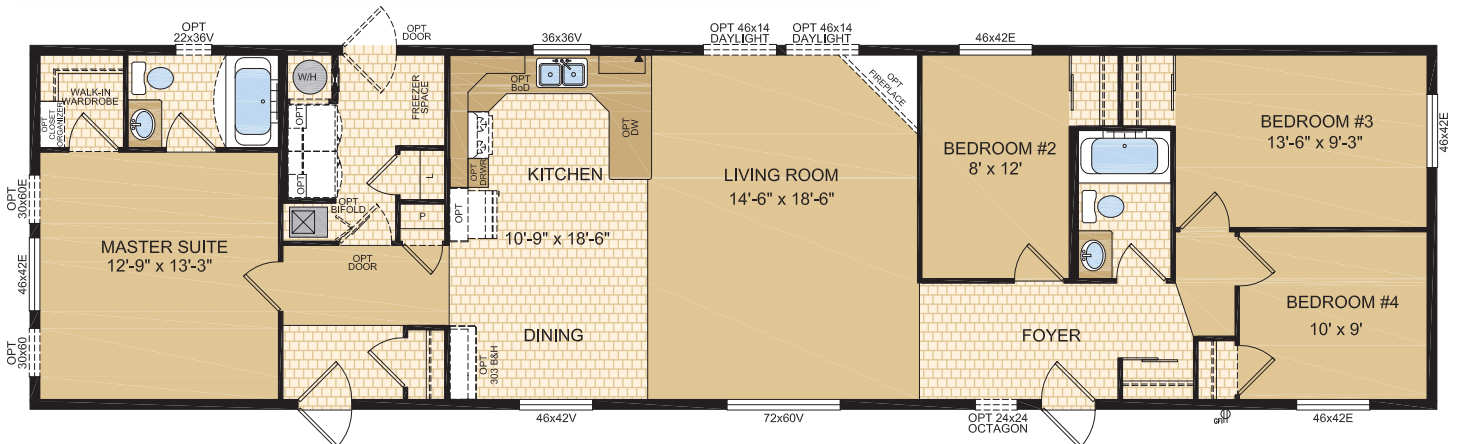
20' x 76' - 1,520 sq.ft.



## Orlando

### Model 20117

20' x 76' - 1,520 sq.ft.

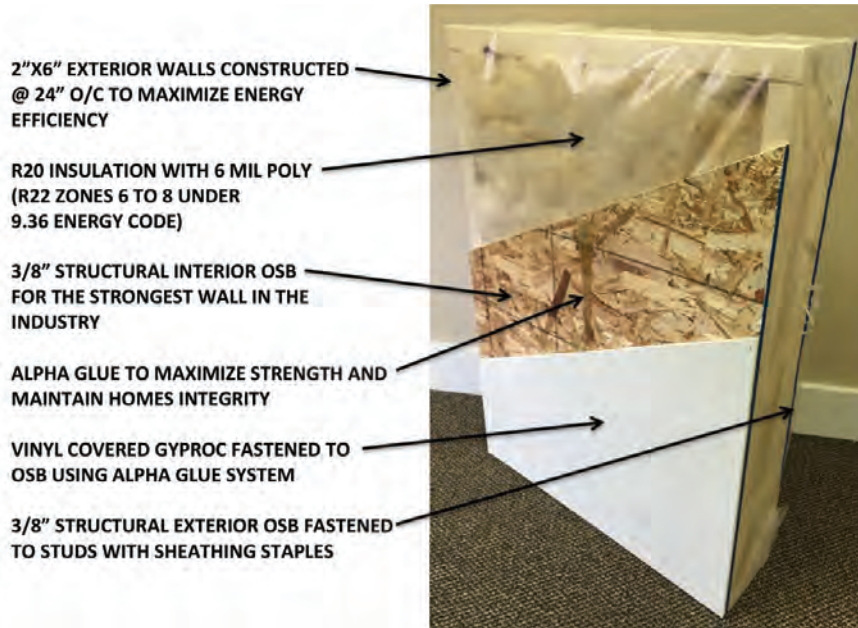


# SILVERWOOD

SINGLE SECTION HOMES

## Exterior Wall Construction

*Best Standard in the Housing Industry!*



*"We surpass the competition!"*



# Samlan Homes Canada

# Call: 780-219-5555

[www.samlanhomes.com](http://www.samlanhomes.com)